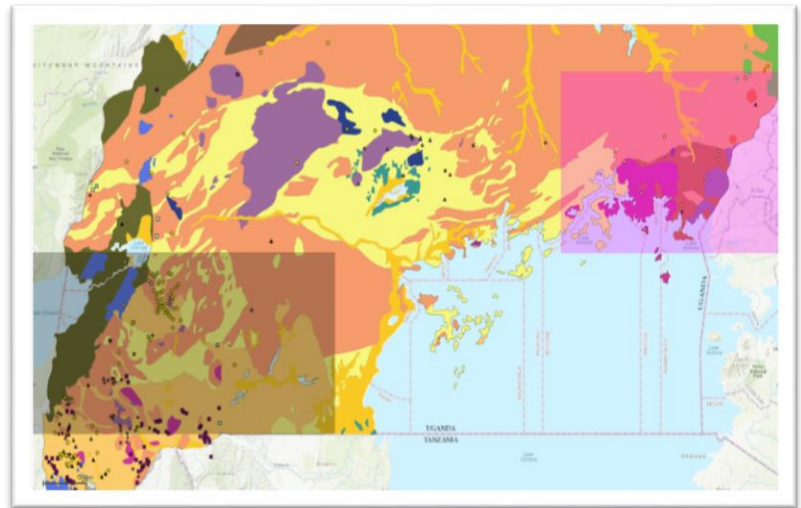


Jinja and Mbarara Regions- Uganda

East of Kampala, the capital city of Uganda, is the greenstone belt, known as Jinja. This area is prospective for gold, base metals, phosphates, rare earth elements and vermiculite. Southwest of Kampala, is the Mbarara region, which has the potential for gold and base metals including copper, lead, nickel and zinc.

It is recognized that geological data is required for economic growth, social development, environmental management and stewardship, poverty reduction and wealth creation.

To facilitate the better understanding of the geology and economic potential of the area, a consortium of organizations including the Uganda Directorate of Geological Survey and Mines (UDGSM) and the Ugandan Chamber of Mines and Petroleum (UCMP) mounted a major data portal project to make geodata for the Jinja and Mbarara regions (pictured right).



Available Data

The dataset comprises of geography, geological data, ground geophysics, airborne geophysics, magnetic, radiometric and electromagnetic data, inversions as well as interpretations and various reports

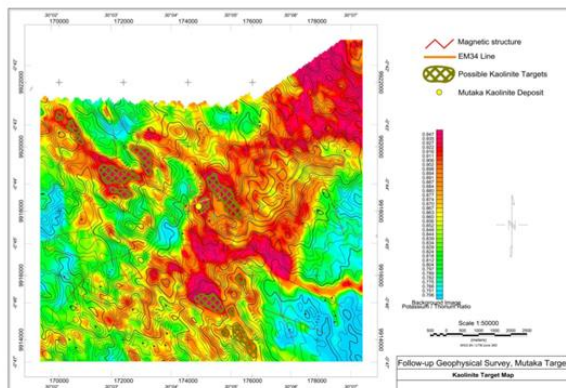


Figure 8: Mutaka, Kaolinite Target Map. (Figure not to scale).

Also, there is geodata available through the integration of the portal with data from [OneGeology](#) (collaboration of global geological surveys), [Trimble's Landfolio](#) and the British Geological Survey's archived information.