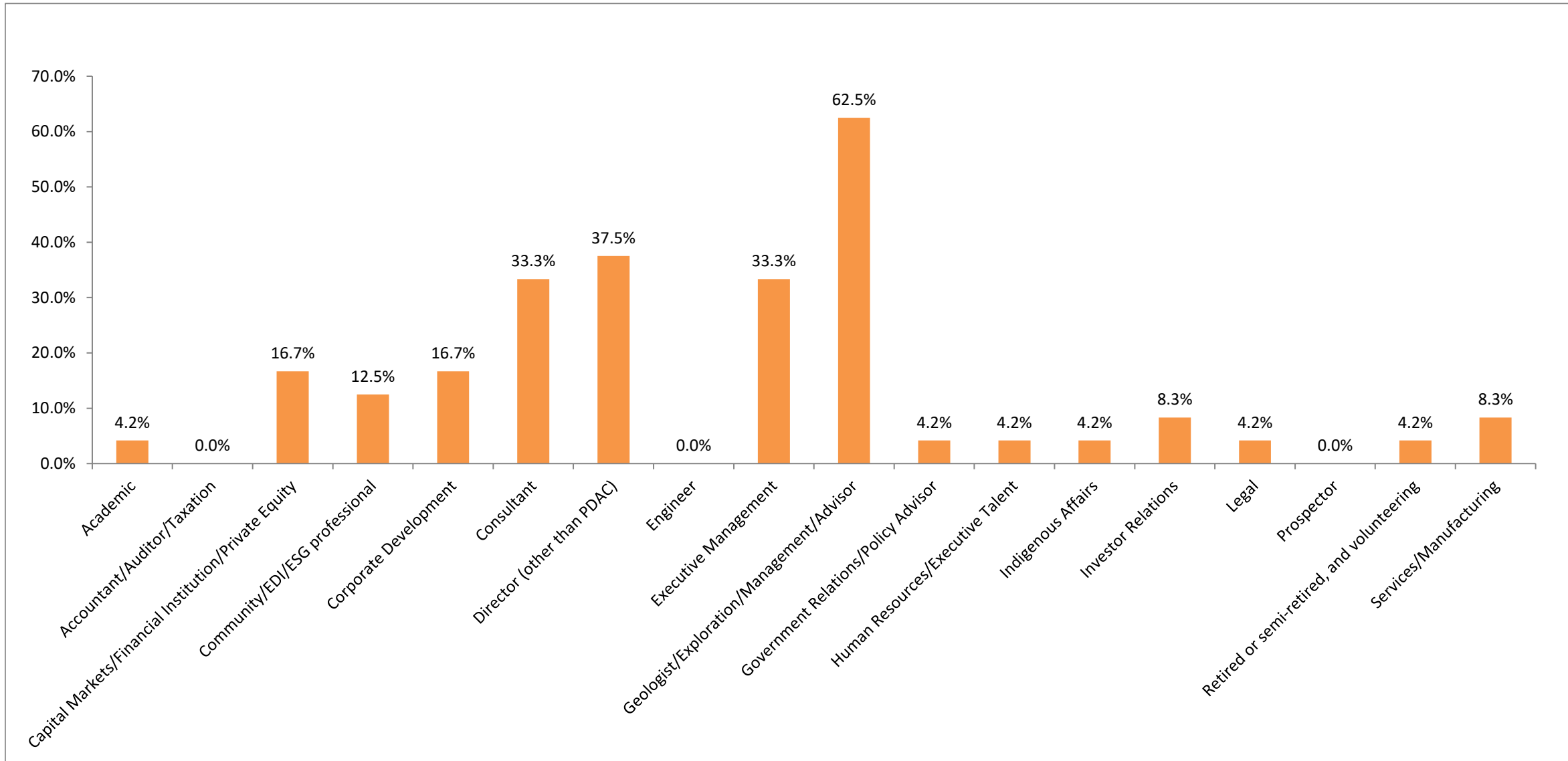


# PDAC Director Skills Survey

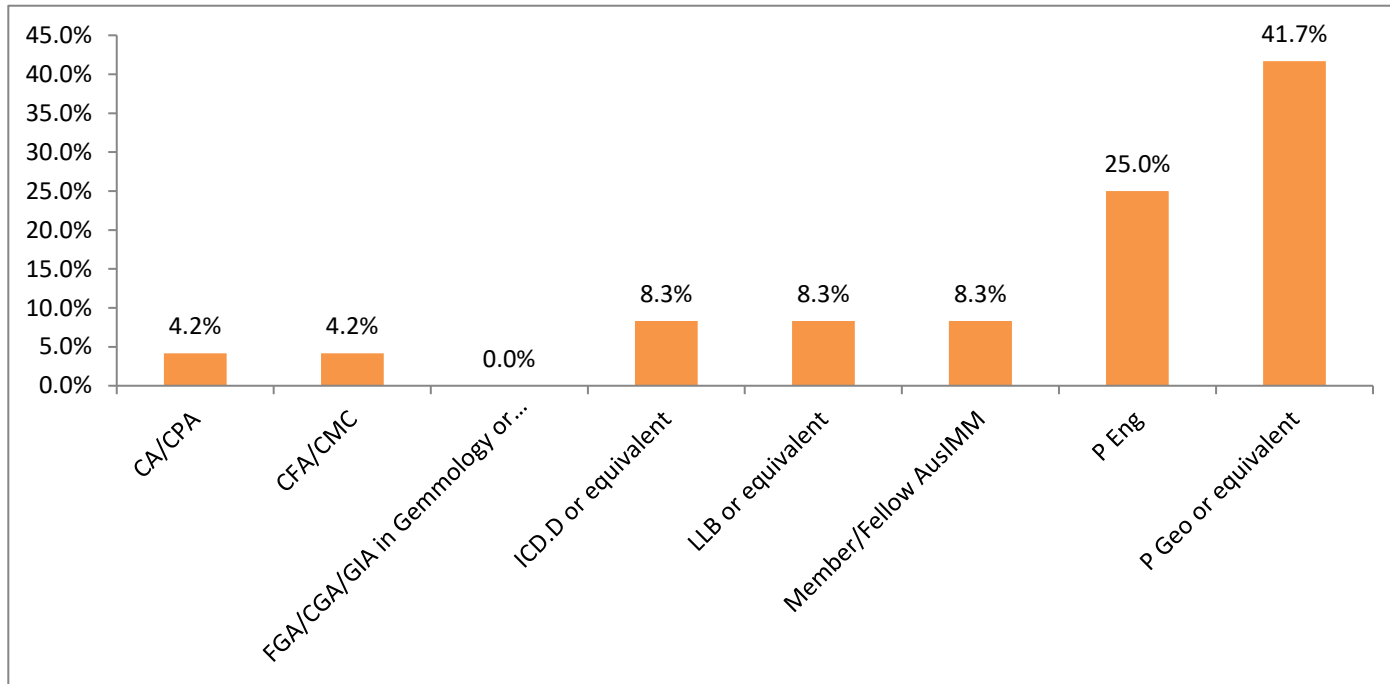
April 2024

What is your principal occupation? Check up to 3 that best apply:



<b>Answer Choices</b>	<b>Responses</b>	
Academic	4.2%	1
Accountant/Auditor/Taxation	0.0%	0
Capital Markets/Financial Institution/Private Equity	16.7%	4
Community/EDI/ESG professional	12.5%	3
Corporate Development	16.7%	4
Consultant	33.3%	8
Director (other than PDAC)	37.5%	9
Engineer	0.0%	0
Executive Management	33.3%	8
Geologist/Exploration/Management/Advisor	62.5%	15
Government Relations/Policy Advisor	4.2%	1
Human Resources/Executive Talent	4.2%	1
Indigenous Affairs	4.2%	1
Investor Relations	8.3%	2
Legal	4.2%	1
Prospector	0.0%	0
Retired or semi-retired, and volunteering	4.2%	1
Services/Manufacturing	8.3%	2

**What are your professional designations? Check all that apply:**

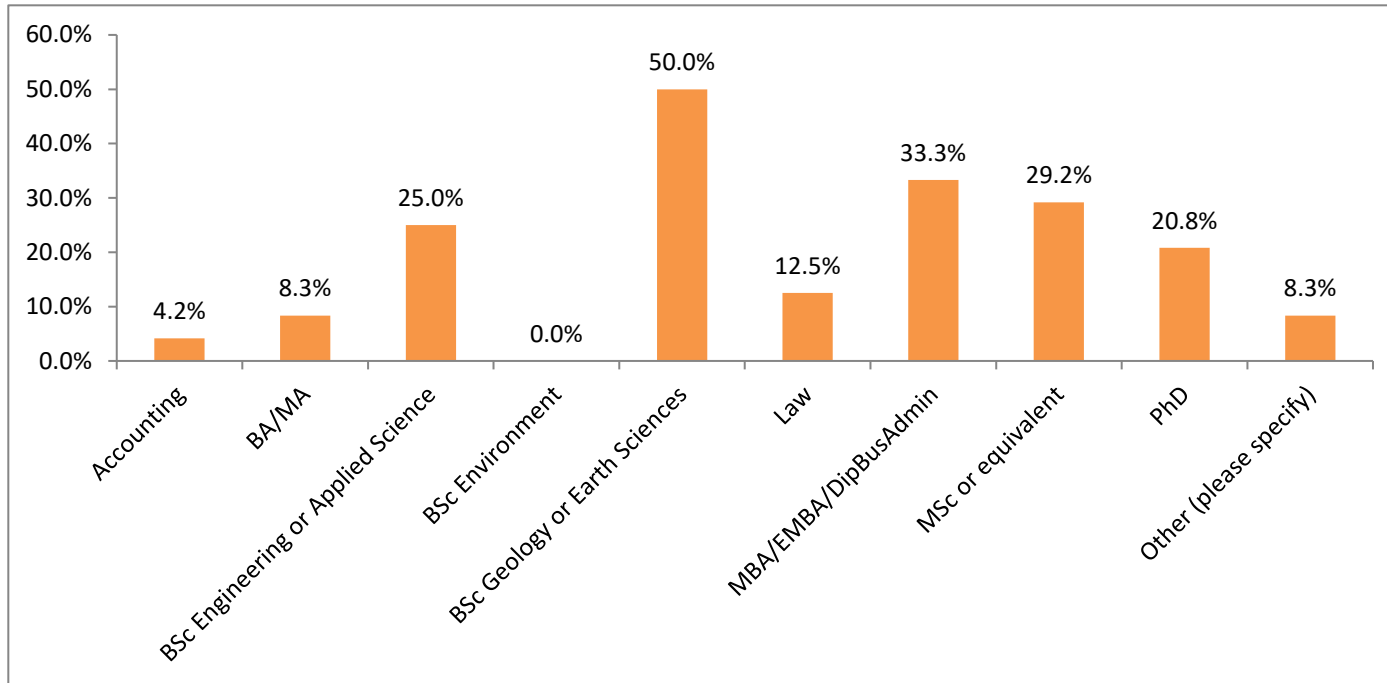


**Answer Choices**

**Responses**

CA/CPA	4.2%	1
CFA/CMC	4.2%	1
FGA/CGA/GIA in Gemmology or equivalent	0.0%	0
ICD.D or equivalent	8.3%	2
LLB or equivalent	8.3%	2
Member/Fellow AusIMM	8.3%	2
P Eng	25.0%	6
P Geo or equivalent	41.7%	10

**What are your degrees and college or university diplomas? Check all that apply:**

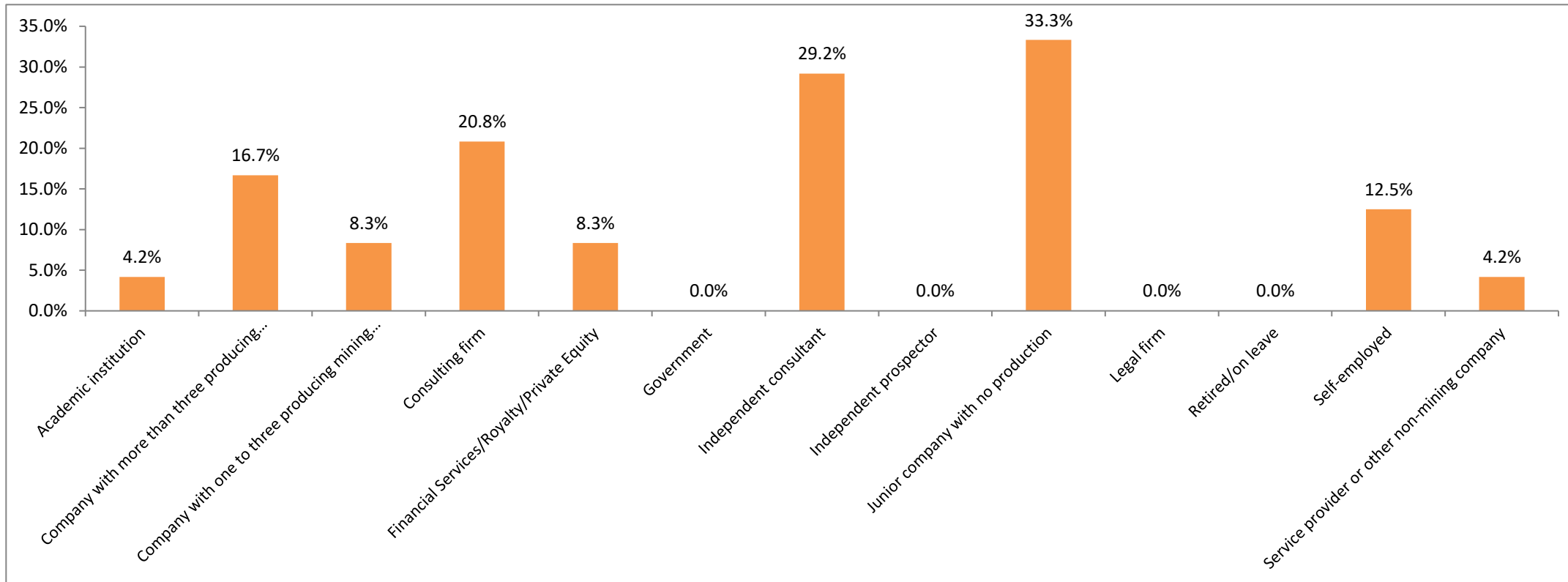


**Answer Choices**

**Responses**

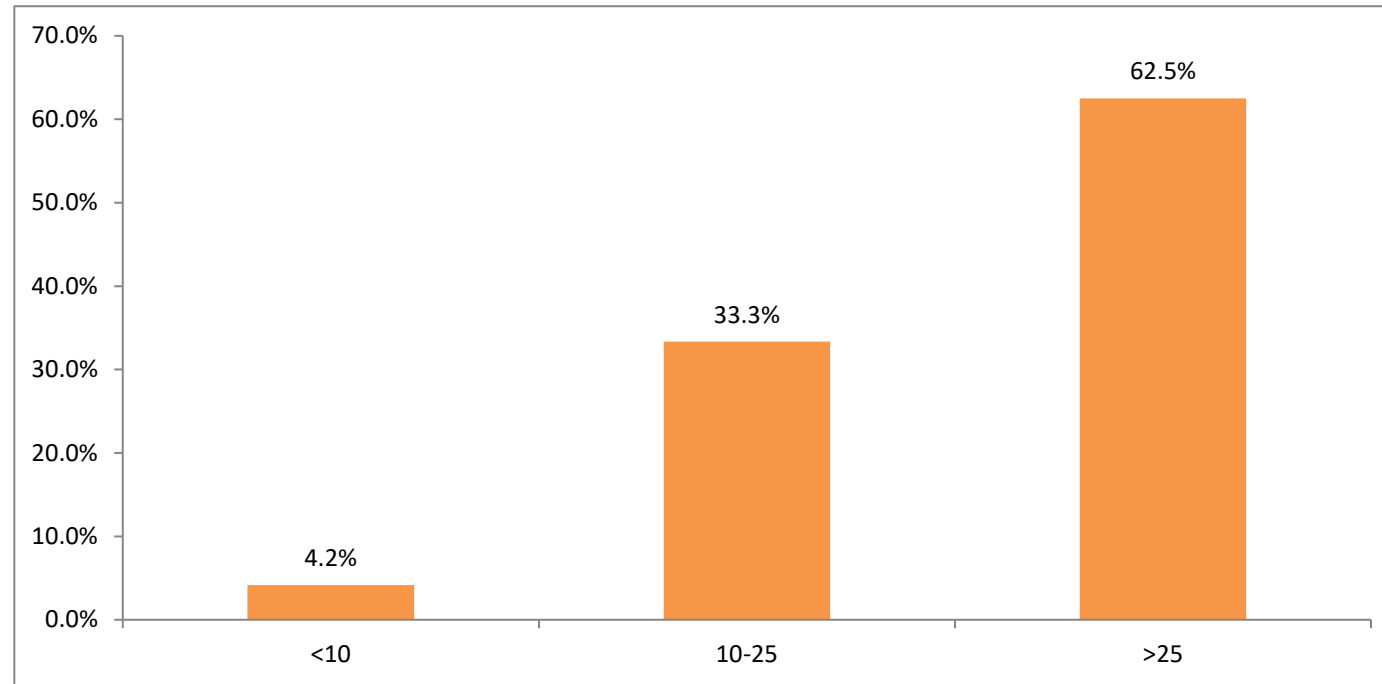
Accounting	4.2%	1
BA/MA	8.3%	2
BSc Engineering or Applied Science	25.0%	6
BSc Environment	0.0%	0
BSc Geology or Earth Sciences	50.0%	12
Law	12.5%	3
MBA/EMBA/DipBusAdmin	33.3%	8
MSc or equivalent	29.2%	7
PhD	20.8%	5
Other (please specify)	8.3%	2
Masters in Human Resources Management		
Currently enrolled in a Certificate of Mining Law program		

**Who is your current employer? Check up to two:**



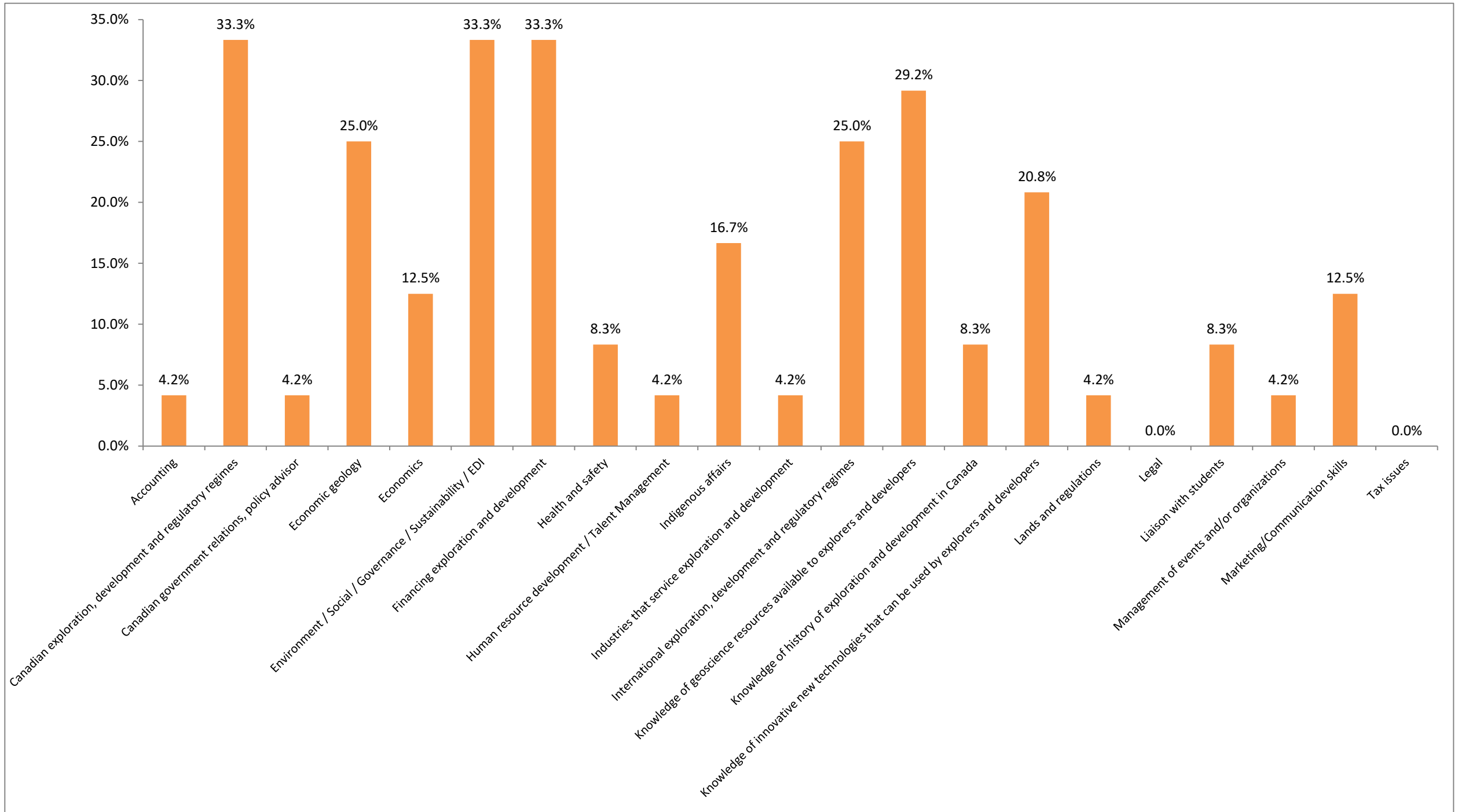
Answer Choices	Responses
Academic institution	4.2% 1
Company with more than three producing mining operations	16.7% 4
Company with one to three producing mining operations	8.3% 2
Consulting firm	20.8% 5
Financial Services/Royalty/Private Equity	8.3% 2
Government	0.0% 0
Independent consultant	29.2% 7
Independent prospector	0.0% 0
Junior company with no production	33.3% 8
Legal firm	0.0% 0
Retired/on leave	0.0% 0
Self-employed	12.5% 3
Service provider or other non-mining company	4.2% 1

How many years have you spent working in exploration, development, mining, or services to exploration, development and mining? Check one:



Answer Choices	Responses	Count
<10	4.2%	1
10-25	33.3%	8
>25	62.5%	15

**What are the three most important skills or bodies of knowledge that you bring to the Board? Check up to three that best apply:**



<b>Answer Choices</b>	<b>Responses</b>	
Accounting	4.2%	1
Canadian exploration, development and regulatory regimes	33.3%	8
Canadian government relations, policy advisor	4.2%	1
Economic geology	25.0%	6
Economics	12.5%	3
Environment / Social / Governance / Sustainability / EDI	33.3%	8
Financing exploration and development	33.3%	8
Health and safety	8.3%	2
Human resource development / Talent Management	4.2%	1
Indigenous affairs	16.7%	4
Industries that service exploration and development	4.2%	1
International exploration, development and regulatory regimes	25.0%	6
Knowledge of geoscience resources available to explorers and developers	29.2%	7
Knowledge of history of exploration and development in Canada	8.3%	2
Knowledge of innovative new technologies that can be used by explorers and developers	20.8%	5
Lands and regulations	4.2%	1
Legal	0.0%	0
Liaison with students	8.3%	2
Management of events and/or organizations	4.2%	1
Marketing/Communication skills	12.5%	3
Tax issues	0.0%	0