

The logo features a stylized mountain peak composed of several overlapping triangles in white, light grey, and orange. A thin vertical orange line is positioned to the right of the logo.

PDAC
S-IMEW
Student-Industry Mineral Exploration Workshop

April 29 – May 14, 2026



2026

STUDENTS



Alexander Denison
S-IMEW 2026
University of Waterloo



Ashley Green
S-IMEW 2026
Memorial University of Newfoundland



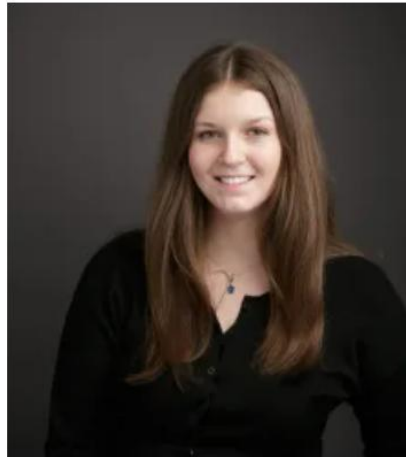
Benjamin Linton
S-IMEW 2026
Queen's University



Calliope Lochrie
S-IMEW 2026
University of British Columbia Okanagan



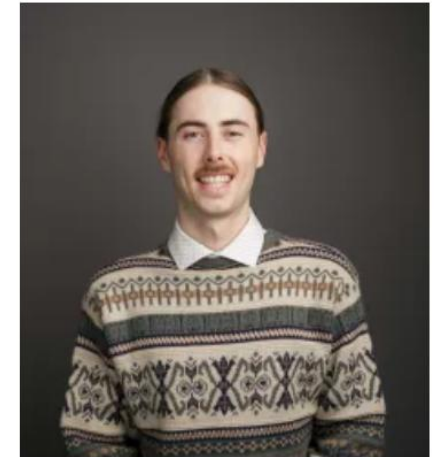
Chloe Oxner
S-IMEW 2026
Saint Mary's University



Claudia Foggett
S-IMEW 2026
Western University



Elise Delaney
S-IMEW 2026
Lakehead University



Gareth King
S-IMEW 2026
Vancouver Island University



2026

STUDENTS



Garis Barot
S-IMEW 2026
Universite Laval



Heather Tocher
S-IMEW 2026
University of Victoria



Isaiah Mihailoff
S-IMEW 2026
Dalhousie University



Jaeden Reggler
S-IMEW 2026
Barrick Mining Corporation



Jaime Burns
S-IMEW 2026
St. Francis Xavier University



Jeremy Rose
S-IMEW 2026
University of Toronto



Marissa Pimentel
S-IMEW 2026
Simon Fraser University



Matthew Friesen
S-IMEW 2026
University of Manitoba

 **2026**
STUDENTS



Maya Lecuyer
S-IMEW 2026
University of Calgary



Olivier Turcotte
S-IMEW 2026
Universite du Quebec a Chicoutimi



Philippe Paquet
S-IMEW 2026
Gold Fields



Quintanna Seve
S-IMEW 2026
University of Saskatchewan



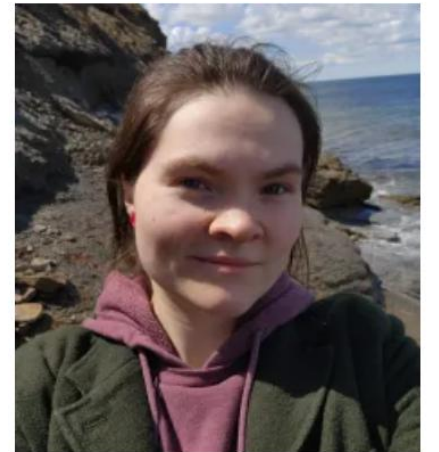
Roxana Gorodnichy
S-IMEW 2026
University of Ottawa



Sydney Brimicombe
S-IMEW 2026
Mount Royal University



Taryn Marshall
S-IMEW 2026
Laurentian University



Zailynne Durant
S-IMEW 2026
Acadia University



2026

PREMIUM
SPONSOR

BARRICK

WEDNESDAY, APRIL 29

| **ARRIVAL IN SUDBURY**

The 2026 cohort has landed in Sudbury!

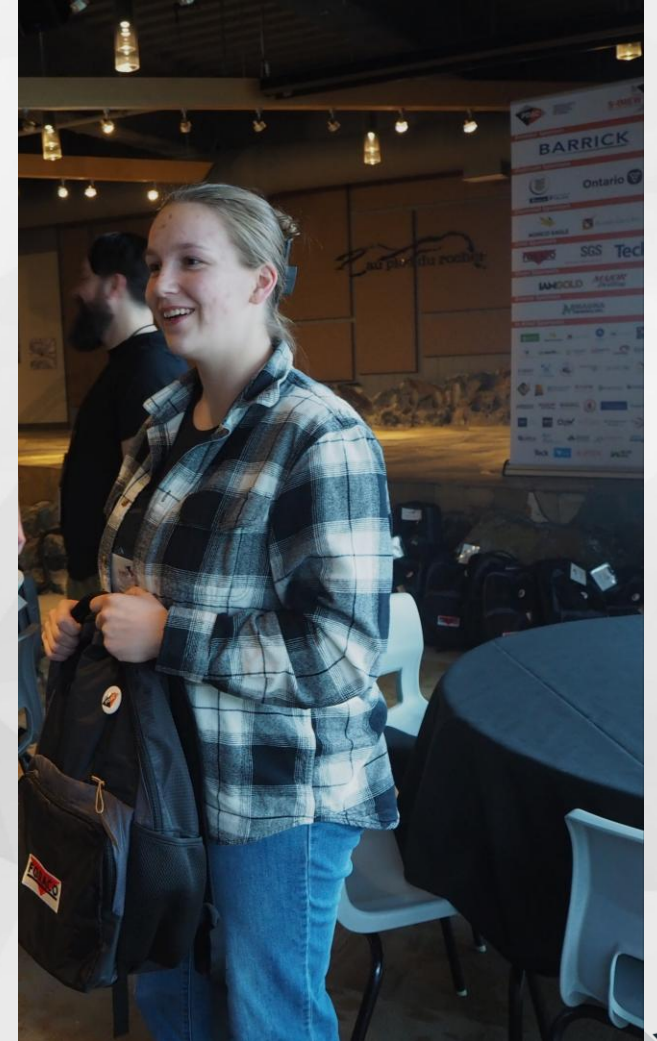
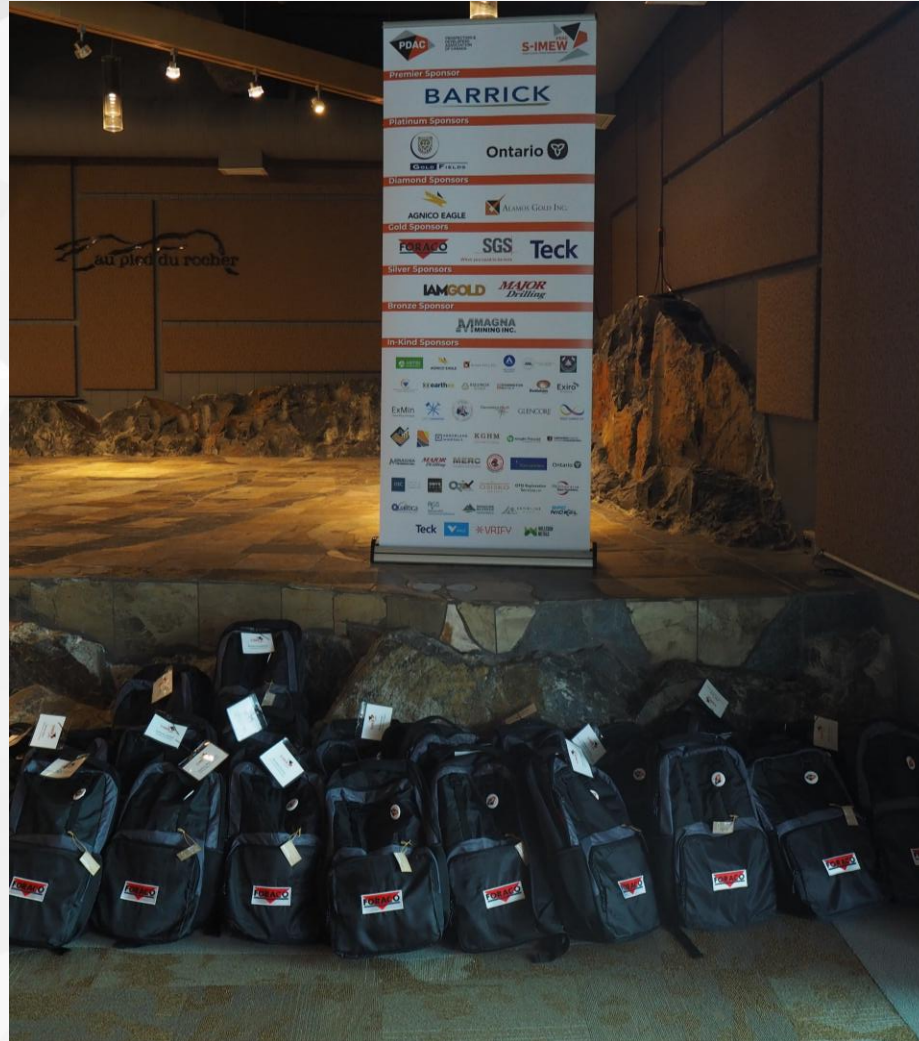


WEDNESDAY, APRIL 29
| ARRIVAL IN SUDBURY

Getting to know each other on the first evening



WEDNESDAY, APRIL 29
| ARRIVAL IN SUDBURY





2026

PLATINUM
SPONSORS



GOLD FIELDS

Ontario



THURSDAY, APRIL 30

| **SUDBURY BASIN & NETWORKING**

Shirley Peloquin, Ontario Geological Survey, (OGS) preparing the students for the Sudbury Basin Tour.



THURSDAY, APRIL 30

| **SUDBURY BASIN & NETWORKING**

First stop, the famous Discovery Site!



THURSDAY, APRIL 30

| **SUDBURY BASIN & NETWORKING**

Gareth King (Vancouver Island University) and Matthew Friesen (University of Manitoba) eyeing sulphides at the Discovery Site.



THURSDAY, APRIL 30

| **SUDBURY BASIN & NETWORKING**

Brad Clarke (KGHM) and Grant Mourre (SPC Nickel Corp) discussing the Chelmsford Fm. with the students.



THURSDAY, APRIL 30

| **SUDBURY BASIN & NETWORKING**

Jaime Burns (St. Francis Xavier University) taking a closer look at the Chelmsford Fm. turbidites (Bouma sequence)



THURSDAY, APRIL 30

| **SUDBURY BASIN & NETWORKING**

Isaiah Mihailoff (Dalhousie University) inspecting the Levack Gneiss.





2026

DIAMOND
SPONSORS



AGNICO EAGLE



ALAMOS GOLD INC.

THURSDAY, APRIL 30
| SUDBURY BASIN & NETWORKING



THURSDAY, APRIL 30

| **SUDBURY BASIN & NETWORKING**

Heather Tocher (University of Victoria) and Olivier Turcotte (Universite du Quebec a Chicoutimi) collecting samples of the fall-back breccia.



THURSDAY, APRIL 30

| **SUDBURY BASIN & NETWORKING**

Lunch with a view at Onaping's High Falls.





2026

GOLD

SPONSORS

FORACO

SGS

Teck

When you need to be sure

THURSDAY, APRIL 30

| **SUDBURY BASIN & NETWORKING**

Isaiah Mihailoff (Dalhousie University) and Claudia Foggett (Western University) enjoying the first shatter cones of the Workshop!



THURSDAY, APRIL 30

| **SUDBURY BASIN & NETWORKING**

Roxana Gorodnichy (University of Ottawa) and Matthew Friesen (University of Manitoba) collecting sulphides at Vale's Copper Cliff Offset Dyke.



THURSDAY, APRIL 30

| **SUDBURY BASIN & NETWORKING**

Ashley Kirwan (Orix Geoscience) setting the foundation for two weeks of networking!



FRIDAY, MAY 1

| **REGIONAL MAPPING**

Ready for a snowy day of regional mapping with the OGS Precambrian Geoscientists!



FRIDAY, MAY 1

| **REGIONAL MAPPING**

Jeremy Rose (University of Toronto) Calliope Lochrie (University of British Columbia, Okanagan), Maya Lecuyer (University of Calgary) and Matthew Friesen (University of Manitoba) are all smiles in the snow!





2026

GOLD

SPONSORS

FORACO

SGS

Teck

When you need to be sure

FRIDAY, MAY 1

| **REGIONAL MAPPING**

Marissa Pimentel (Simon Fraser University), Heather Tocher (University of Victoria), Jaeden Reggler (Barrick Mining Corp), Jaime Burns (St. Francis Xavier University) and Garis Barot (Universite Laval) learning regional mapping techniques.



FRIDAY, MAY 1

| **REGIONAL MAPPING**

Team Red working on their map with Xiaohui Zhou (OGS)



FRIDAY, MAY 1

| REGIONAL MAPPING

A big thank you to the OGS for a great day!



FRIDAY, MAY 1

| **WELCOME RECEPTION**

At Dynamic Earth's Big Nickel for the S-IMEW Welcome Reception.





2026

Bronze

SPONSOR

**AMMAGNA
MINING INC.**

FRIDAY, MAY 1

| **WELCOME RECEPTION**

Networking with local industry.



FRIDAY, MAY 1

| WELCOME RECEPTION

Scott Berdahl (Snowline Gold Corp.) sharing his experiences in the Keynote Presentation.





2026

IN-KIND SPONSORS



ABITEGEOPHYSICS



AGNICO EAGLE



ALAMOS GOLD INC.



right solutions.
right partner.



ANALYTICAL SOLUTIONS LTD.
QA/QC Consulting



CHIROUGAMAU DIAMOND DRILLING LTD
FORAGES CHIROUGAMAU LTÉE



ExMin
Consulting Services



GLENCORE



GOLD CANDLE LTD.



KENORLAND
MINERALS

SATURDAY, MAY 2

| **EXPLORATION INDUSTRY: KEY DRIVERS**

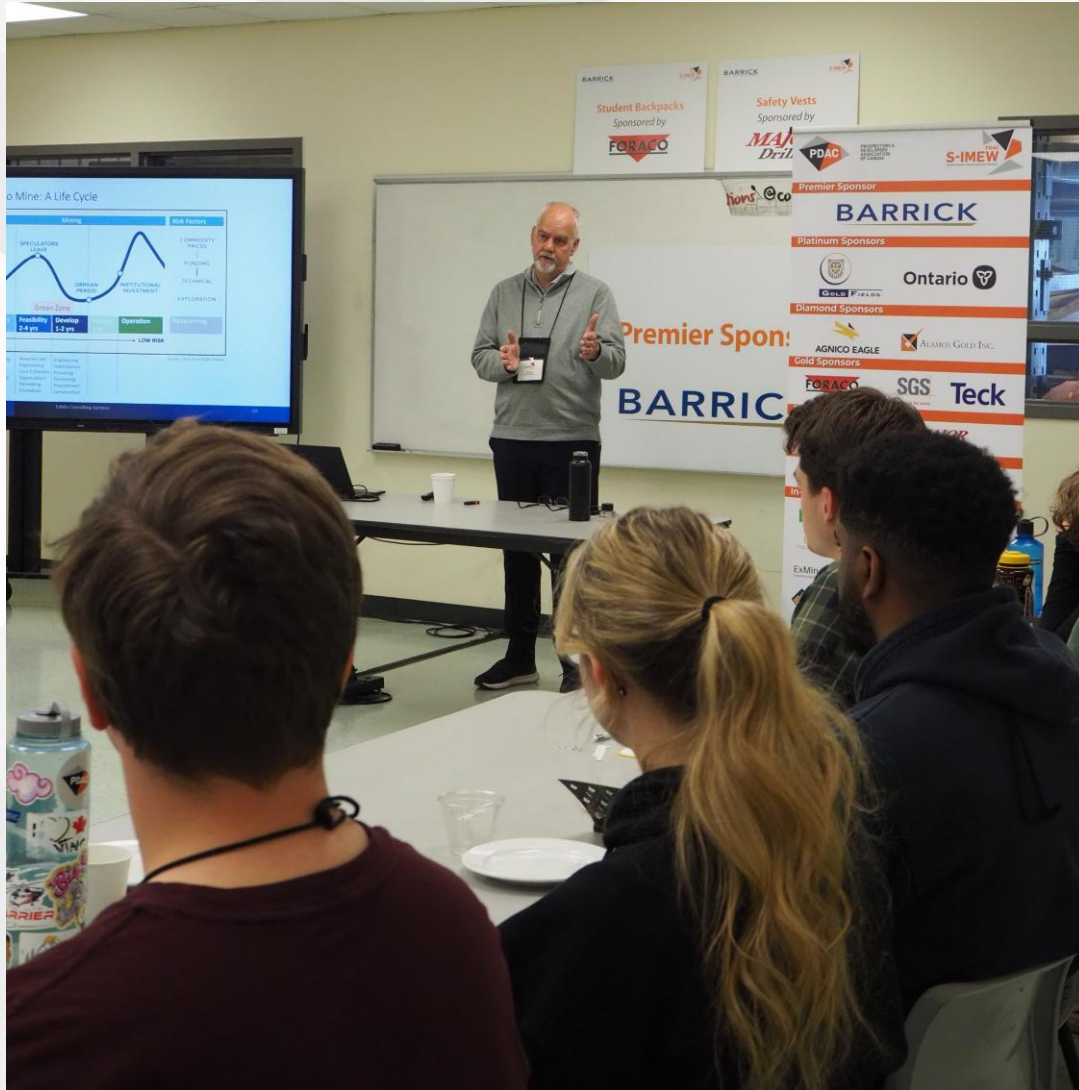
Lisa McDonald (PDAC) kicking off Key Drivers Day in the classroom.



SATURDAY, MAY 2

| EXPLORATION INDUSTRY: KEY DRIVERS

Thinking outside of the rocks with Ken Leigh (ExMin Consulting) and learning about economic concepts to economic mines.



SATURDAY, MAY 2

| **EXPLORATION INDUSTRY: KEY DRIVERS**

Joshua Bailey (Agnico Eagle) presenting on property agreements.



SATURDAY, MAY 2

| **EXPLORATION INDUSTRY: KEY DRIVERS**

Nick Joyce (Hudbay Minerals, S-IMEW 2013) presenting on Capital Markets followed by Brad Simser (Glencore) discussing Mining Methods.



SATURDAY, MAY 2

| **EXPLORATION INDUSTRY: KEY DRIVERS**

Taylor Haid (VRIFY, S-IMEW 2013) rounding out Key Drivers day with reflections on his career from S-IMEW 2013 to present.





2026

IN-KIND SPONSORS

KGHM
INTERNATIONAL

KP Knight Piésold
CONSULTING

Laurentian University
Université Laurentienne

MMAGNA
MINING INC.

MAJOR
Drilling

MERC
Mineral Exploration Research Centre
at the IARQUAII School of Earth Sciences



Nova
Mining Exploration Solutions
mineral exploration technology, advisory
consulting geophysics

Ontario

OSC ONTARIO
SECURITIES
COMMISSION

ONYX
GOLD

ORIX
GEOSCIENCE

OSISKO
METALS

OTD Exploration
Services LTD

PROforma
Adam Promotions

Qualitica
Consulting Inc.

RGS Resourceful
Geoscience Solutions

RONACHER
MCKENZIE
GEOSCIENCE

SNOWLINE
GOLD

SPC
NICKEL
CORP

Teck

VALE

VRIFY

WILLESON
METALS

SUNDAY, MAY 3

| **EXPLORATION MAPPING DAY**

Ian Trinder setting the stage for a day of exploration mapping.



SUNDAY, MAY 3

| **EXPLORATION MAPPING DAY**

A beautiful day to learn exploration mapping techniques, at the Parkin offset dyke.



SUNDAY, MAY 3

| **EXPLORATION MAPPING DAY**

Claudia Foggett (Western University) adding structural measurements to her map.



SUNDAY, MAY 3

| **EXPLORATION MAPPING DAY**

Alex Denison (University of Waterloo) drawing lithological contacts on his outcrop map.



SUNDAY, MAY 3

| **EXPLORATION MAPPING DAY**

Gareth King (Vancouver Island University), Elise Delaney (Lakehead University) and Chloe Oxner (Saint Mary's University) adding data to their outcrop maps.



SUNDAY, MAY 3

| **EXPLORATION MAPPING DAY**

Philippe Paquet (Gold Fields) and Roxana Gorodnichy (University of Ottawa) with team lead Joy Carter, (S-IMEW 2019 & Snowline Gold) discussing interpretations.



SUNDAY, MAY 3

| **EXPLORATION MAPPING DAY**

Ben Linton (Queen's University) looking at the sulphide-rich dyke at the Parkin Property outcrop.



SUNDAY, MAY 3

| **EXPLORATION MAPPING DAY**

Isaiah Mihailoff (Dalhousie University) getting the grid number to add to his outcrop map.



SUNDAY, MAY 3

| **EXPLORATION MAPPING DAY**

Calliope Lochrie (University of British Columbia, Okanagan), Ashley Green (Memorial University of Newfoundland) and Olivier Turcotte (Université du Quebec a Chicoutimi) with team lead Cam Green (S-IMEW 2014 & Evolution Mining) sampling the host rock to determine the lithology.



SUNDAY, MAY 3

| **EXPLORATION MAPPING DAY**

Jaeden Reggler (Barrick Mining Corp) determining rock types and looking for a lithological contact.



SUNDAY, MAY 3

| **EXPLORATION MAPPING DAY**

Marissa Pimentel (Simon Fraser University) looking at sulphide minerals.





2026

PREMIUM
SPONSOR

BARRICK

MONDAY, MAY 4

| PROFESSIONAL RESPONSIBILITY DAY

Angele Poitras (AP Consulting) starts Professional Responsibility day discussing the implications of remote work on mental health.



MONDAY, MAY 4

| PROFESSIONAL RESPONSIBILITY DAY

Andrea Waldie covers professional responsibility.



MONDAY, MAY 4

| PROFESSIONAL RESPONSIBILITY DAY

Craig Waldie (Ontario Securities Commission) explains NI 43-101 and why you should care.



MONDAY, MAY 4

| PROFESSIONAL RESPONSIBILITY DAY

John Stringer (Major Drilling) discusses how geologists and drillers work together.



MONDAY, MAY 4

| PROFESSIONAL RESPONSIBILITY DAY

Amanda Baker and Jessica Prince (Agnico Eagle) presenting on Core Today, Data forever.



MONDAY, MAY 4

| PROFESSIONAL RESPONSIBILITY DAY

Shaun O'Connor (Hornfels Consulting) demonstrating Applications of AI in Geology.



MONDAY, MAY 4

| PROFESSIONAL RESPONSIBILITY DAY

Chris Beckett-Brown (OGS & S-IMEW 2015) sharing his S-IMEW Alumni Reflections.





2026

PLATINUM
SPONSORS



GOLD FIELDS

Ontario



TUESDAY, MAY 5

| **GEOPHYSICS DAY**

Zailynne Durant (Acadian University) observing real time EM data.



TUESDAY, MAY 5

| **GEOPHYSICS DAY**

Alex Denison (University of Waterloo) and Matthew Friesen (University of Manitoba) carrying the EM tripod.



TUESDAY, MAY 5

| **GEOPHYSICS DAY**

Maya Lecuyer (University of Calgary) and Elise Delaney (Lakehead University) setting up an EM tripod.



TUESDAY, MAY 5

| **GEOPHYSICS DAY**

Team working to level the EM tripod.



TUESDAY, MAY 5

| **GEOPHYSICS DAY**

Marissa Pimentel (Simon Fraser University) laying out the EM loop wire.



TUESDAY, MAY 5

| **GEOPHYSICS DAY**

Matthew Friesen (University of Manitoba) inserting the IP electrode.



TUESDAY, MAY 5

| GEOPHYSICS DAY

Richard Smith (Laurentian University) explaining Potential Fields.



TUESDAY, MAY 5

| GEOPHYSICS DAY

David Chau (Earth Ex Geophysical Solutions) expanding on EM.



TUESDAY, MAY 5
| **GEOPHYSICS DAY**

Student groups combining all the information learned on Geophysics Day to complete a targeting exercise.



TUESDAY, MAY 5

| **GEOPHYSICS DAY**

Student groups combining all the information learned on Geophysics Day to complete a targeting exercise.



TUESDAY, MAY 5

| **GEOPHYSICS DAY**

Pam Coles (Abitibi Geophysics) ending the evening with an engaging presentation about her career journey.





2026

DIAMOND
SPONSORS



AGNICO EAGLE



ALAMOS GOLD INC.

WEDNESDAY, MAY 6

| RESPONSIBLE EXPLORATION DAY

Alexandria Marcotte (Osisko Metals) leading a thought-provoking activity teaching students to de-risk an exploration project.



WEDNESDAY, MAY 6

| **RESPONSIBLE EXPLORATION DAY**

Alexandria Marcotte (Osisko Metals) leading a great activity on de-risking an exploration project.



WEDNESDAY, MAY 6

| RESPONSIBLE EXPLORATION DAY

Chris Lytwyn (CGW Mineral Resources) sharing his experience prospecting and Carla Petahtegoose presenting on the importance of community engagement in exploration.



WEDNESDAY, MAY 6

| RESPONSIBLE EXPLORATION DAY

Bill McGuinty (OTD Exploration) leading a discussion on ESG in exploration.



WEDNESDAY, MAY 6

| RESPONSIBLE EXPLORATION DAY

Amber Blackwell (Knight Piésold Consulting) presenting on environmental assessments throughout the mining cycle.





2026

GOLD

SPONSORS

FORACO

SGS

Teck

When you need to be sure

THURSDAY, MAY 7

| **FIELD TRIP: KIRKLAND LAKE**

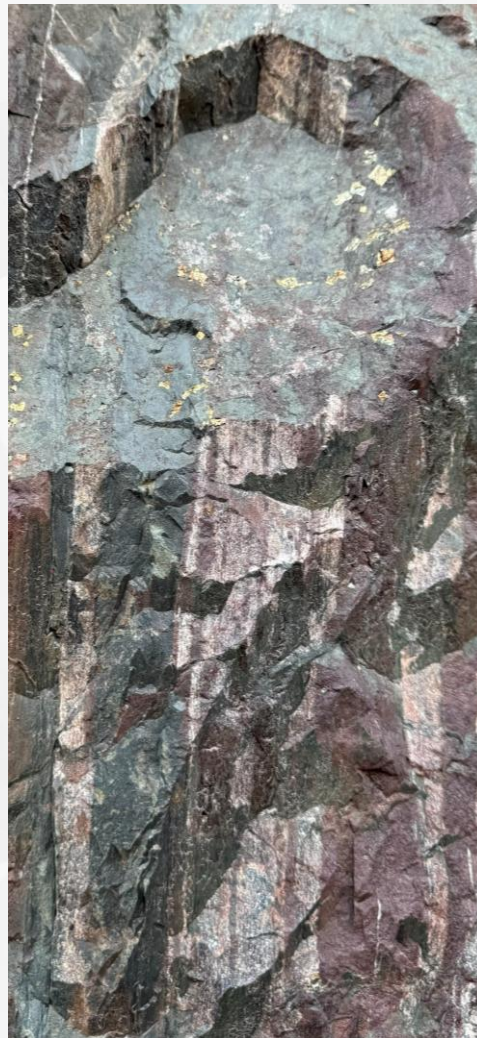
Jeremy Rose (University of Toronto), Isaiah Mihailoff (Dalhousie University) and Chloe Oxner (Saint Mary's University) collecting samples at the Temagami BIF.



THURSDAY, MAY 7

| **FIELD TRIP: KIRKLAND LAKE**

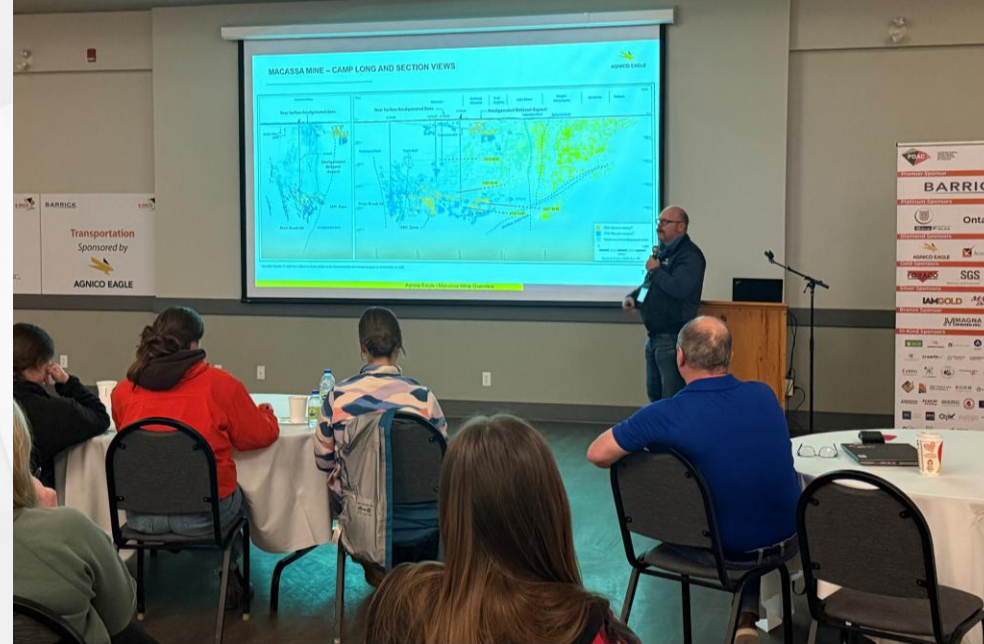
Heather Tocher (University of Victoria) and Claudia Foggett (Western University) exploring the BIF.



THURSDAY, MAY 7

| FIELD TRIP: KIRKLAND LAKE

James Suma-Momoh (OGS) providing an overview of Kirkland Lake Geology and Chris Evans (Agnico Eagle) & Niels Hendrikx (Alamos Gold) explaining the geology of the Macassa Mine and Young-Davidson mines ahead of the underground mine tours!



THURSDAY, MAY 7

| **FIELD TRIP: KIRKLAND LAKE**

Students networking with Kirkland Lake industry at our Industry Mixer.



THURSDAY, MAY 7

| **FIELD TRIP: KIRKLAND LAKE**

Students networking with Kirkland Lake industry at the KL Industry Mixer.





2026

SILVER

SPONSORS

IAMGOLD[®]

MAJOR
Drilling

FRIDAY, MAY 8

| **FIELD TRIP: KIRKLAND LAKE**

Ready to head underground at Alamos Gold's Young-Davidson Mine!



FRIDAY, MAY 8

| **FIELD TRIP: KIRKLAND LAKE**

Collecting samples from 1km below surface.



FRIDAY, MAY 8

| FIELD TRIP: KIRKLAND LAKE



FRIDAY, MAY 8

| **FIELD TRIP: KIRKLAND LAKE**
Agnico Eagle's Macassa Mine Tour!



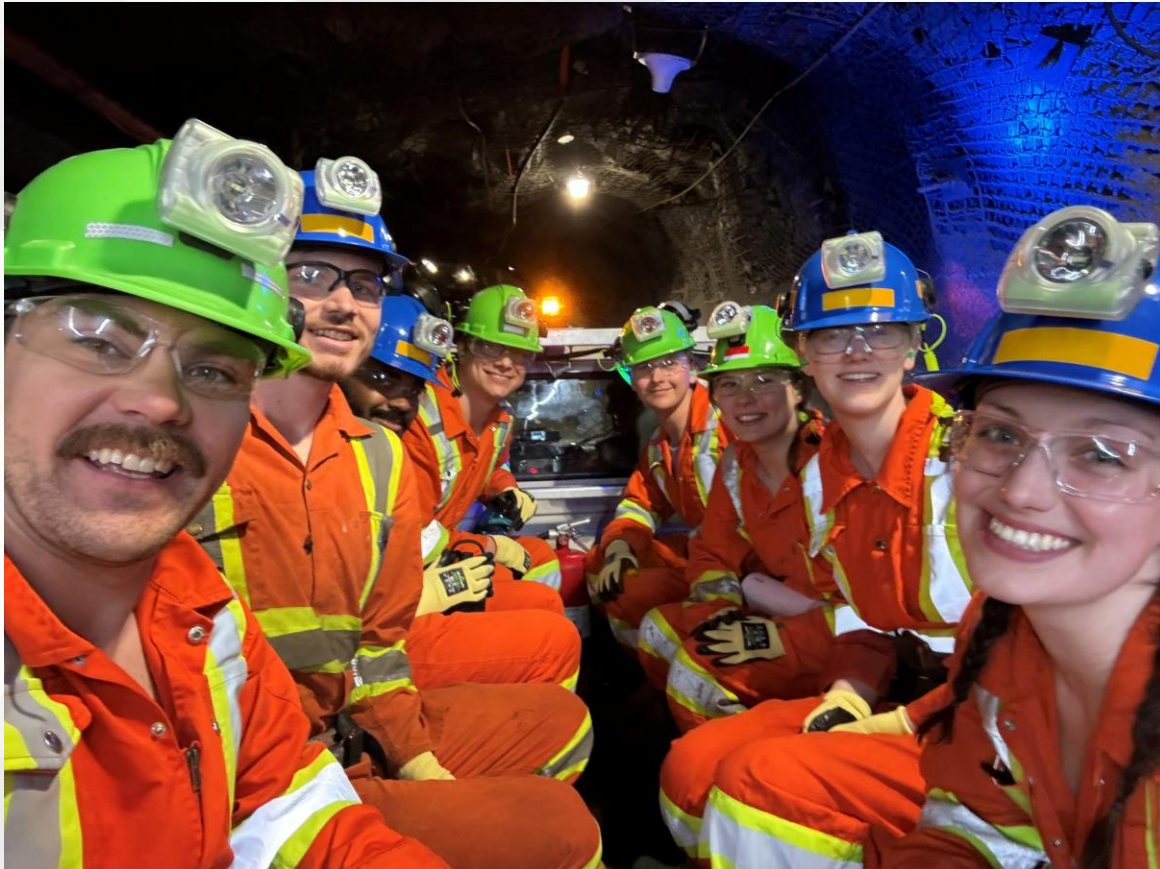
FRIDAY, MAY 8

| FIELD TRIP: KIRKLAND LAKE



FRIDAY, MAY 8

| FIELD TRIP: KIRKLAND LAKE



FRIDAY, MAY 8

| FIELD TRIP: KIRKLAND LAKE



FRIDAY, MAY 8

| FIELD TRIP: KIRKLAND LAKE



FRIDAY, MAY 8

| FIELD TRIP: KIRKLAND LAKE





2026

Bronze

SPONSOR

MMAGNA
MINING INC.

SATURDAY, MAY 9

| **FIELD TRIP: KIRKLAND LAKE**

Kirkland Lake Regional Geology Tour with James Suma-Momoh (OGS) at the Gowganda Formation conglomerates.



SATURDAY, MAY 9

| **FIELD TRIP: KIRKLAND LAKE**

Marissa Pimentel (Simon Fraser University) and Alex Denison (University of Waterloo) looking at pyrite-bearing trachyte.



SATURDAY, MAY 9

| **FIELD TRIP: KIRKLAND LAKE**

Quintanna Seve (University of Saskatchewan), Olivier Turcotte (Universite du Quebec a Chicoutimi), Alex Denison (University of Waterloo) and Gareth King (Vancouver Island University) viewing Timiskaming conglomerates.



SATURDAY, MAY 9

| **FIELD TRIP: KIRKLAND LAKE**

Jaeden Reggler (Barrick Mining Corp) asking James Suma-Momoh (OGS) about the Tisdale Assemblage iron-rich tholeiitic basalts.



SATURDAY, MAY 9

| FIELD TRIP: KIRKLAND LAKE

Outcrop of syenite from the Otto Stock.



Larder Lake-Cadillac Deformation





2026

IN-KIND SPONSORS



ABITEGEOPHYSICS



AGNICO EAGLE



ALAMOS GOLD INC.



right solutions.
right partner.



ANALYTICAL SOLUTIONS LTD.
QA/QC Consulting



CHIROUGAMAU DIAMOND DRILLING LTD
FORAGES CHIROUGAMAU LTÉE



ExMin
Consulting Services



GLENCORE



GOLD CANDLE LTD.



KENORLAND
MINERALS

SUNDAY, MAY 10

| FIELD TRIP: KIRKLAND LAKE



SUNDAY, MAY 10

| **FIELD TRIP: KIRKLAND LAKE**

Visiting Gold Candle Ltd. at the historic Kerr-Addison Mine site.



SUNDAY, MAY 10

| **FIELD TRIP: KIRKLAND LAKE**

Thanks to the Gold Candle Ltd. team for a great morning reviewing core and a drill visit on our way out of Kirkland Lake!



SUNDAY, MAY 10

| **FIELD TRIP: KIRKLAND LAKE**

Next Stop: Cobalt! Group photo at the Nipissing Hill Lookout.



SUNDAY, MAY 10

| **FIELD TRIP: KIRKLAND LAKE**

Gowganda Coleman member conglomerate.



SUNDAY, MAY 10

| FIELD TRIP: KIRKLAND LAKE





2026

IN-KIND SPONSORS

KGHM
INTERNATIONAL

KP Knight Piésold
CONSULTING

Laurentian University
Université Laurentienne

MAGNA
MINING INC.

MAJOR
Drilling

MERC
Mineral Exploration Research Centre
at the IARQUAI School of Earth Sciences



Nova
Mining Exploration Solutions
mineral exploration technology, advisory
consulting geophysics

Ontario

OSC ONTARIO
SECURITIES
COMMISSION

ONYX
GOLD

ORIX
GEOSCIENCE

OSISKO
METALS

OTD Exploration
Services LTD

PROforma
Adam Promotions

Qualitica
Consulting Inc.

RGS Resourceful
Geoscience Solutions

RONACHER
MCKENZIE
GEOSCIENCE

SNOWLINE
GOLD

SPC
NICKEL
CORP

Teck

VALE

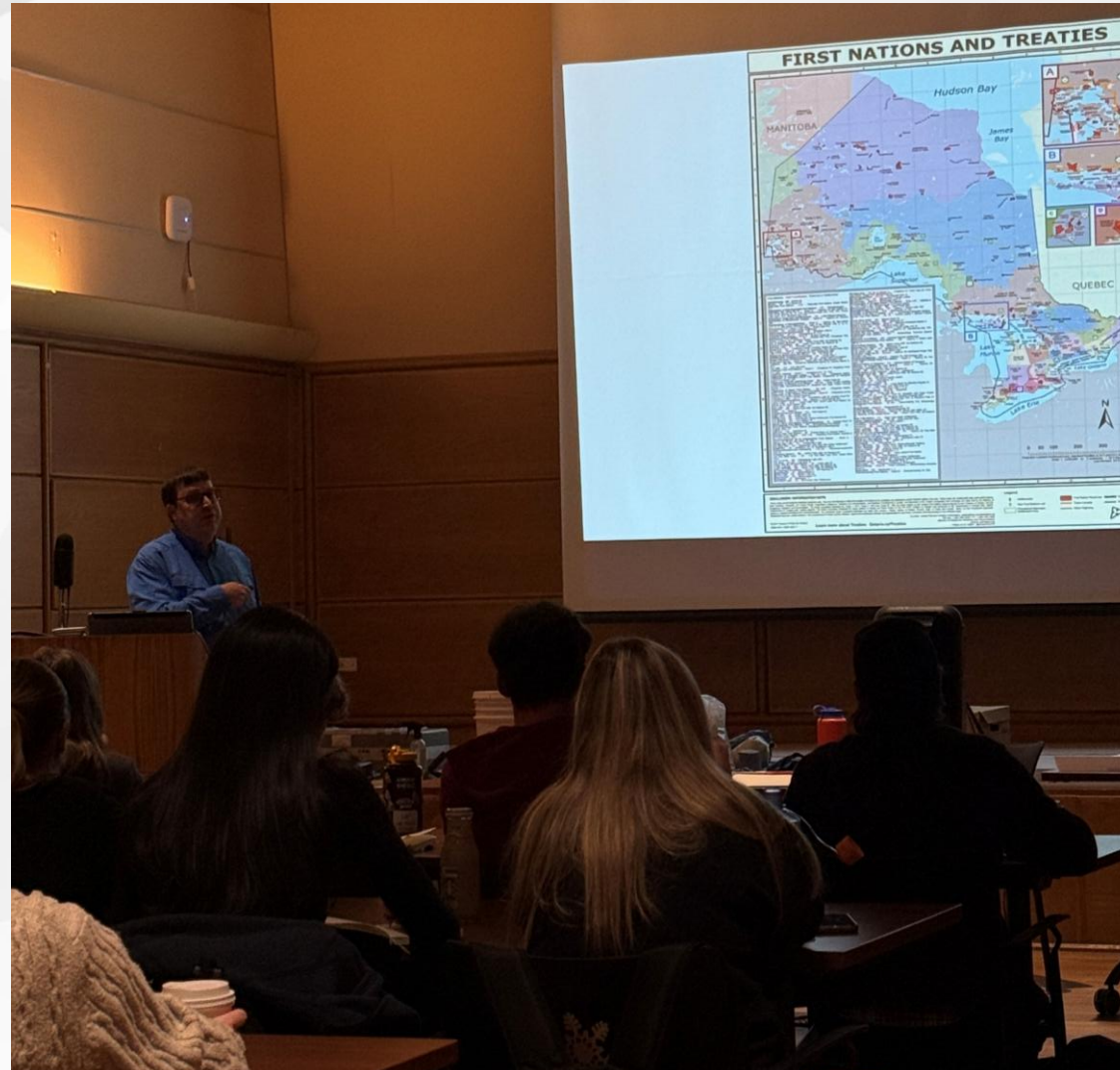
VRIFY

WILLESON
METALS

MONDAY, MAY 11

| **GEOCHEMISTRY DAY**

Mathieu Levesque (OGS) highlighting the importance of Indigenous Relations in exploration to kick off Geochemistry Day.



MONDAY, MAY 11
| GEOCHEMISTRY DAY

Chris Beckett-Brown (OGS and S-IMEW 2015 Alumni) setting the students up for success in the Exploration Game by explaining lake and stream sediments and soil sampling.



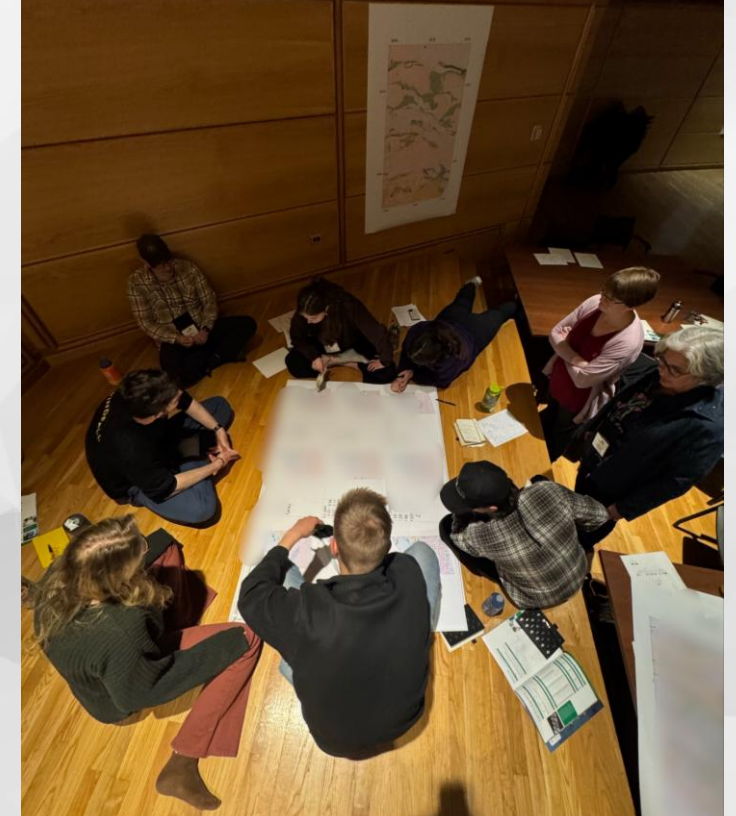
MONDAY, MAY 11
| GEOCHEMISTRY DAY

Grant Hagedorn (OGS and S-IMEW 2016 Alumni) explaining till sampling and interpretation.



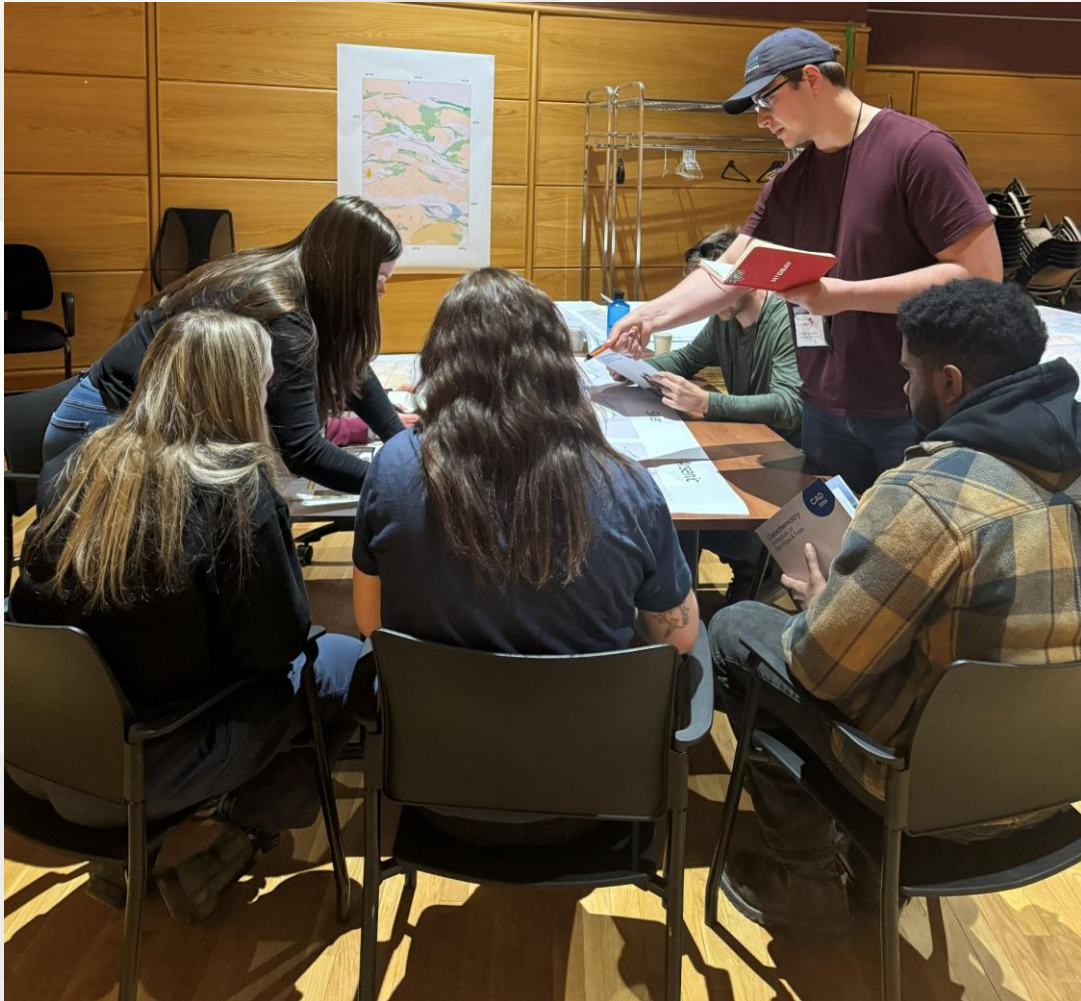
MONDAY, MAY 11
| **GEOCHEMISTRY DAY**

2026 student groups getting competitive during the Exploration Targeting Game.



MONDAY, MAY 11
| **GEOCHEMISTRY DAY**

Gareth King (Vancouver Island University) browsing the ALS Fee Schedule during the Exploration Game!



MONDAY, MAY 11
| **GEOCHEMISTRY DAY**

Networking at the Geochemistry dinner and rounding out the day with a career presentation from Lynda Bloom (ASL).





2026

PREMIUM
SPONSOR

BARRICK

TUESDAY, MAY 12

| **ERRINGTON METALS DAY**

Frank Santaguida (Errington Metals) guiding the cohort through the lay of the land of the Errington Exploration Property.



TUESDAY, MAY 12

| **ERRINGTON METALS DAY**

Roxana Gorodnichy (University of Ottawa) and Matthew Friesen (University of Manitoba) taking a closer look at the Errington Property outcrop while Taryn Marshall (Laurentian University) hammers a sample from the waste pile.



TUESDAY, MAY 12
| ERRINGTON METALS DAY

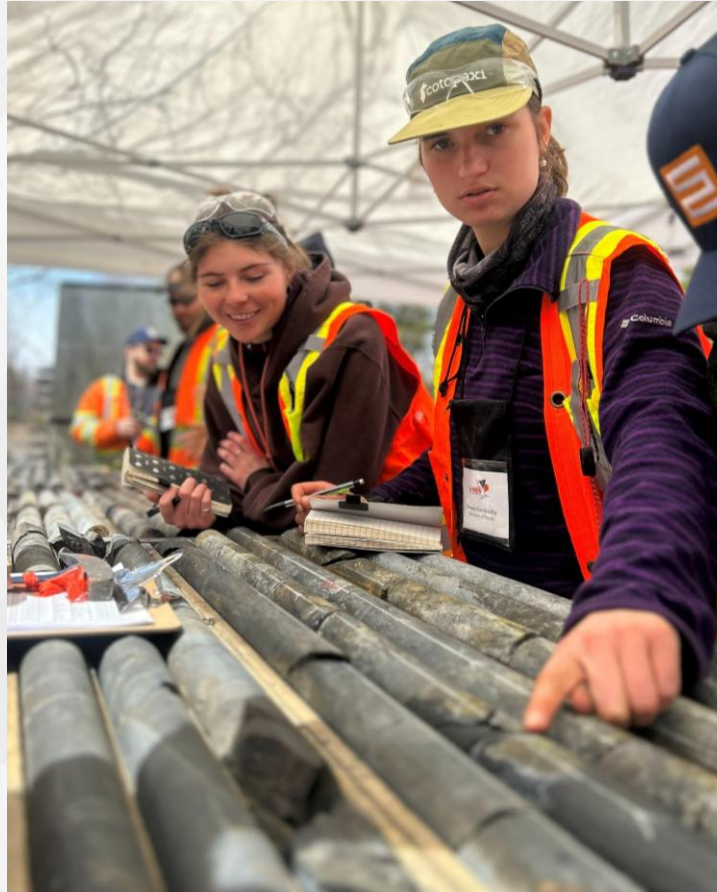


TUESDAY, MAY 12
| ERRINGTON METALS DAY



TUESDAY, MAY 12
| ERRINGTON METALS DAY

Locked in during the core logging exercise at Errington Metals.



TUESDAY, MAY 12
| ERRINGTON METALS DAY



TUESDAY, MAY 12

| ERRINGTON METALS DAY

Conor McKinley (Onyx Gold Corp. and S-IMEW 2010 Alumni) giving the Workshop's last S-IMEW Alumni Reflections.



TUESDAY, MAY 12

| ERRINGTON METALS DAY

Students packing their rock boxes with ALL of their samples from the Workshop!





2026

PLATINUM
SPONSORS



GOLD FIELDS

Ontario



WEDNESDAY, MAY 13

| QA/QC, RESOURCE MODELLING & INTERPRETATION OF DATA DAY

Shastri Ramnath (Exiro Minerals Corp.) and Sydney Ramnath (Exiro Minerals Corp.) leading the students through a data interpretation exercise.



WEDNESDAY, MAY 13

| QA/QC, RESOURCE MODELLING & INTERPRETATION OF DATA DAY

Elisabeth Ronacher (RMG) presenting on Resource and 3D Modelling.



WEDNESDAY, MAY 13

| QA/QC, RESOURCE MODELLING & INTERPRETATION OF DATA DAY

Chantal Jollette (Qualitica Consulting Inc.) closing out the last classroom day with a presentation on QA/QC.



WEDNESDAY, MAY 13
| FINALE

